



## Classic London Day Tour Admission fee included!!!

### Details:

247 Coach Hire gets you to must see places in London. Join our tour and you will be introduced to the most iconic places of one of the greatest cities in the world

#### The price includes:

- Group transportation with modern coach (air conditioning, Wi-Fi, WC, drinks on board);
- Admission to Buckingham Palace, Westminster Abbey, London Eye, The Tower of London.

#### The price does not include:

- Different meeting/drop-off point (available on request), meals, guide (available on request)

**Price starting at £ 75 / person**

### Buckingham Palace - Westminster Abbey

### Big Ben - London Eye - Tower Bridge

### Tower of London - St Paul's Cathedral

### Trafalgar Square



### Description:

**9:00 am** – meeting at Piccadilly Circus Station.

We will start our day with a visit at **Buckingham Palace** and St James's Park. Afterwards we will witness historic coronations, royal marriages and funerals at **Westminster Abbey**. We will take a detour at the most known symbol of London, **Big Ben**. Next we will enjoy a breath taking view over the city from **London's Eye**. Later on we will cross the **Tower Bridge** and get to the **Tower of London**, one of the world's most famous and spectacular fortresses.

The tour also includes a short break at **St Paul's Cathedral** and the end of this one day tour will get you to **Trafalgar Square**, the best place to take London's pulse and summarize your day.



For final rates, details and bookings please contact us at [contact@247coachhire.com](mailto:contact@247coachhire.com) or 002031500522

[www.247coachhire.com](http://www.247coachhire.com)



## Cultural London Day Tour

### Details:

247 Coach Hire gets you to must see places in London. Join our tour and you will be introduced to the most iconic places of one of the greatest cities in the world

#### The price includes:

- Group transportation with modern coach (air conditioning, Wi-Fi, WC, drinks on board);
- Free admission to The British Museum - Tate Modern, Victoria and Albert Museum, Natural History Museum, The National Gallery.

#### The price does not include:

- Different meeting/drop-off point (available on request), meals, guide (available on request)
- Admission fee for temporary exhibitions

**Price starting at £ 15 / person**

### The British Museum - Tate Modern

### Victoria and Albert Museum

### Natural History Museum

### The National Gallery



### Description:

**10:00 am** – meeting at Piccadilly Circus Station.

This cultural tour will take you through every fascinating venue in London.

We meet at 10.00 am sharp in Piccadilly Circus, and start a one day British adventure. So make sure to take your camera, your loved ones and prepare for an unforgettable experience.

The cultural venues that are included in this wonderful tour are the following: The British Museum, Tate Modern, Victoria and Albert Museum, The Natural History Museum and The National Gallery. And all of this will be done until 18.30 in the afternoon. What a fun and educational time saver!



For final rates, details and bookings please contact us at [contact@247coachhire.com](mailto:contact@247coachhire.com) or 002031500522

[www.247coachhire.com](http://www.247coachhire.com)





## London Day Tour for Students

### Details:

247 Coach Hire gets you to must see places in London. Join our tour and you will be introduced to the most iconic places of one of the greatest cities in the world

#### The price includes:

- Group transportation with modern coach (air conditioning, Wi-Fi, WC, drinks on board);
- Admission to Madame Tussauds, British Museum, Tower of London, Tower Bridge, Greenwich.

#### The price does not include:

- Different meeting/drop-off point (available on request), meals, guide (available on request)

**Price starting at £ 77 / person**

### Madame Tussauds – British Museum –

### Tower of London – Tower Bridge - Greenwich



### Description:

**9:00 am** – meeting at Piccadilly Circus Station. The day will start with a fun visit at Madame Tussauds Museum where you can meet your favorite celebrities amazingly shaped in stunning wax figures.

Then we will get you to the British Museum, the place that brings in front of your eyes centuries of history, art and science. A "Best Of" collection from all around the world, gathered in this magical place.

We continue our journey with a back in time stop at Tower of London, one of the world's most famous and spectacular fortresses.

Greenwich will be the last destination of the day: you will cross from one hemisphere to another and learn about the secrets of the universe at the Greenwich Royal Observatory. Join us in this one day tour and you will show you the fun part of being a student!



For final rates, details and bookings please contact us at [contact@247coachhire.com](mailto:contact@247coachhire.com) or 002031500522

[www.247coachhire.com](http://www.247coachhire.com)





## London's Main Landmarks Day Tour

### Details:

247 Coach Hire gets you to must see places in London. Join our tour and you will be introduced to the most iconic places of one of the greatest cities in the world

#### The price includes:

- Group transportation with modern coach (air conditioning, Wi-Fi, WC, drinks on board);
- Admission to Westminster Abbey; London Eye, The Tower of London, The Sherlock Holmes Museum.

#### The price does not include:

- Different meeting/drop-off point (available on request), meals, guide (available on request)

**Price starting at £ 85 / person**

**Buckingham Palace - Westminster Abbey**

**Big Ben - London Eye - Tower of London**

**Tower Bridge - St Paul's Cathedral**

**Trafalgar Square –**

**The Sherlock Holmes Museum**



### Description:

**8:00 am** – meeting at Piccadilly Circus Station  
At 8:15 am we will pay a visit at **Buckingham Palace** and St James's Park. Afterwards we will witness historic coronations, royal marriages and funerals at **Westminster Abbey**. We will take a detour at the most known symbol of London, **Big Ben**. Next we will enjoy a breath taking view over the city from **London's Eye**. Later on we will cross the **Tower Bridge** and get to the **Tower of London**, one of the world's most famous and spectacular fortresses.

The tour also includes a short break at **St Paul's Cathedral** and a meeting with the most popular detective of all times at **The Sherlock Holmes Museum**.

The end of this one day tour will get you to **Trafalgar Square**, the best place to take London's pulse and summarize your day.



For final rates, details and bookings please contact us at [contact@247coachhire.com](mailto:contact@247coachhire.com) or 002031500522

[www.247coachhire.com](http://www.247coachhire.com)



## Day tour at Windsor Castle and Stonehenge

Piccadilly Circus Station - Windsor Castle - Stonehenge - Piccadilly Circus Station (201 miles)

### Description:

**247 Coach Hire** offers the most worthwhile journey in two of the most iconic places in UK. Enjoy our memorable day trip at Windsor Castle and Stonehenge. Walk on royal paths and unravel ancient mysteries.

**8:45 am** – meeting point at Piccadilly Circus Station

**10:00 am** – Windsor Castle

- Visit at the Windsor Castle , State Apartments and St George's Chapel

**14:00 am** – Stonehenge

- Stonehenge historical site
- Stonehenge Museum

**17:00 pm** – pick-up and departure to London



### The price includes:

- Group transportation with modern coach (air conditioning, Wi-Fi, WC, drinks);
- Admission to the ancient circle of Stonehenge;
- Admission to Windsor Castle.

### The price does not include:

- Different meeting/drop-off point (AVAILABLE ON REQUEST)
- Lunch expenses
- Guide (AVAILABLE ON REQUEST)

**Prices starting at  
49£/person**

For final rates, details and bookings please contact us at [contact@247coachhire.com](mailto:contact@247coachhire.com) or 002031500522

[www.247coachhire.com](http://www.247coachhire.com)





## Day tour at Stonehenge and Bath

Piccadilly Circus Station - Stonehenge - Bath - Piccadilly Circus Station (265 miles)

### Description:

**247 Coach Hire** offers the most interactive journey through time in Stonehenge and Bath. Enjoy our memorable day trip. Unravel old mysteries and walk on ancient paths.

**8:45 am** – meeting point at Piccadilly Circus Station

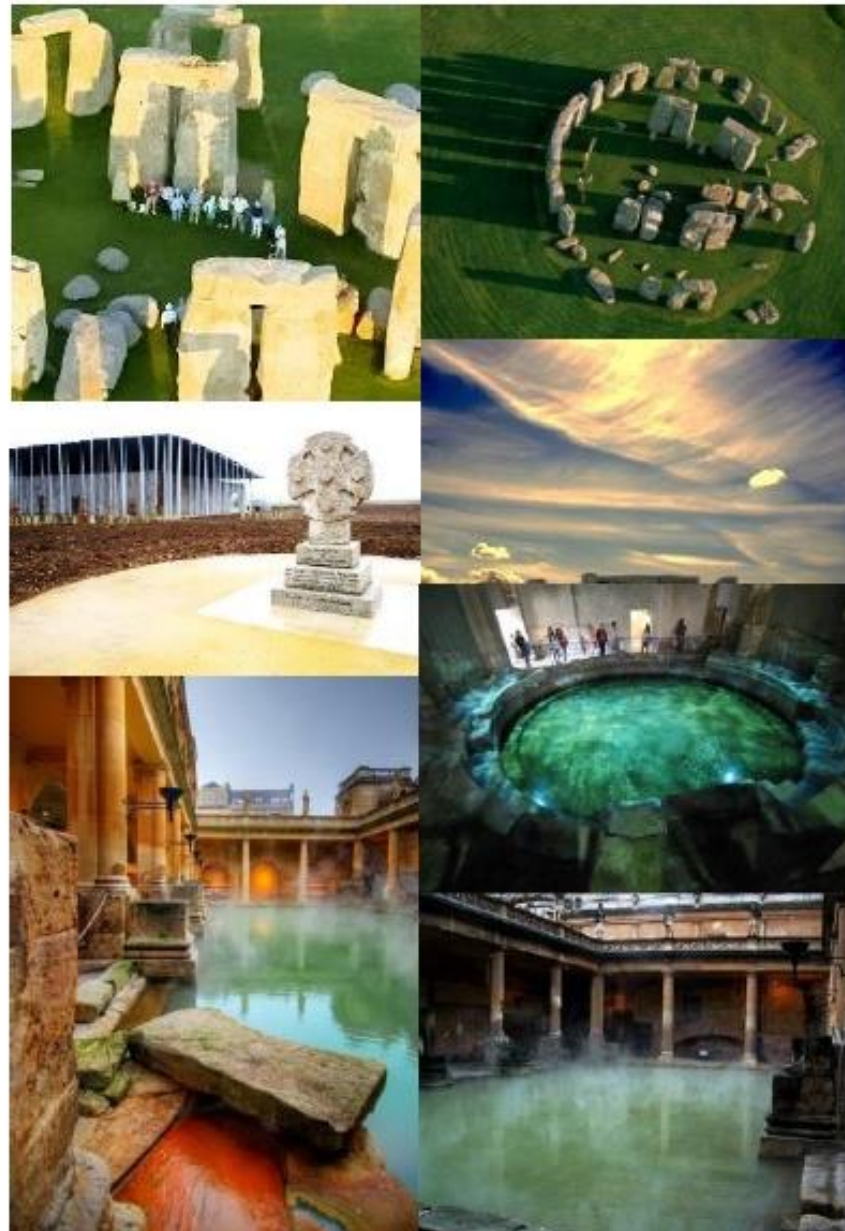
**11:30 am** – Stonehenge (two hours visit)

- Stonehenge historical site
- Stonehenge Museum

**14:30 pm** – Bath

- Free time for lunch
- Visit of the Roman Baths and Fashion Museum in Bath.

**17:00 pm** – pick-up and departure to London



### The price includes:

- Group transportation with modern coach (air conditioning, Wi-Fi, WC, drinks);
- Admission to the ancient circle of Stonehenge;
- Admission to Roman Baths and Fashion Museum in Bath.

### *The price does not include:*

- *Different meeting/drop-off point (AVAILABLE ON REQUEST)*
- *Lunch expenses*
- *Guide (AVAILABLE ON REQUEST)*

**Prices starting at  
57£/person**

For final rates, details and bookings please contact us at [contact@247coachhire.com](mailto:contact@247coachhire.com) or 002031500522

[www.247coachhire.com](http://www.247coachhire.com)





## Amazing Paths

London - Colchester Castle - The Beth Chatto Gardens - Christchurch Mansion - King's College Chapel - Great St Mary Church  
- Fitzwilliam Museum - Audley End House and Gardens - Audley End Miniature Railway

### Itinerary:

**247 Coach Hire** offers the most worthwhile journey in two of the most iconic places in UK. Itinerary

#### Day 1: London – Colchester – Ipswich – Cambridge

Your adventure starts early in the morning, at 8.00 am and it begins with Colchester. In about four hours you will visit the following local attractions Colchester Castle and The Beth Chatto Gardens. Then you get to enjoy a delicious lunch and a little rest upon your arrival in Ipswich. In this area you have the opportunity to see Christchurch Mansion and have a relaxing walk. Around 17.00 pm you will be heading towards your next destination, the famous Cambridge. This is where you can check-in and just relax for the rest of the evening.

#### Day 2: Cambridge – Saffron Walden – London

After an early breakfast, you will visit your first landmark of the day around 9.00 am. Until noon, the tour includes the following touristic objectives: King's College, Great St Mary Church and Fitzwilliam Museum. You will depart Cambridge and head to Saffron Walden at 14.00 pm. Here is where you can take advantage of another series of interesting and educational venues such as Audley End Train, Audley End House and Garden. This wonderful adventure ends with your journey back to London.



### Details:

This two day trip will focus mainly on popular rural British landmarks, perfect for refreshing walks. This Amazing Paths tour is perfect for a honeymoon gift, a couple's getaway or a holiday option for retired people that want to enjoy a relaxing trip. You will have the opportunity to walk on paths that have been used by Royal family members, and important figures from the past. The itinerary includes touristic objectives that range from castles and parks to museums and universities.

#### **The price includes:**

- Group transportation with modern coach (air conditioning, Wi-Fi, WC, drinks);
- Admission to Colchester Castle, The Beth Chatto Gardens, Christchurch Mansion, King's College Chapel, Great St Mary Church, Fitzwilliam Museum, Audley End House and Gardens, Audley End Miniature Railway;

#### **The price does not include:**

- Different meeting/drop-off point (AVAILABLE ON REQUEST), Lunch expenses, Guide (AVAILABLE ON REQUEST)
- On request we can offer accommodation and lunch included in the tour offer

**Price starting at £ 80 / person**

**or £ 135 (including accommodation and breakfast)**

For final rates, details and bookings please contact us at [contact@247coachhire.com](mailto:contact@247coachhire.com) or 002031500522

[www.247coachhire.com](http://www.247coachhire.com)